



STEPHAN Microcut®

Continuous Fine Size Reduction and Emulsification at its Best

One idea - several versions

■ The Stephan Microcut® is a multifunctional fine cutting and dispersing system. The rotor stator system is available as single stage and double stage version.

A wide range of machine layouts meets the requirements of multitudinous segments of the food industry. Homogenous fine cutting and emulsifying of meat and fish can be done as well as forming emulsions and dispersing solids in liquids.

A special layout is suitable for cutting of vegetables and fruits as well as biscuit rework. ■

Benefit from the advantages:

- ✓ Efficient fine grinding
- ✓ Perfect cutting
- ✓ Homogenous mixing
- ✓ Optimal powder dispersing
- ✓ Stable emulsions
- ✓ Constant product quality
- ✓ Easy to operate

simply flexible...



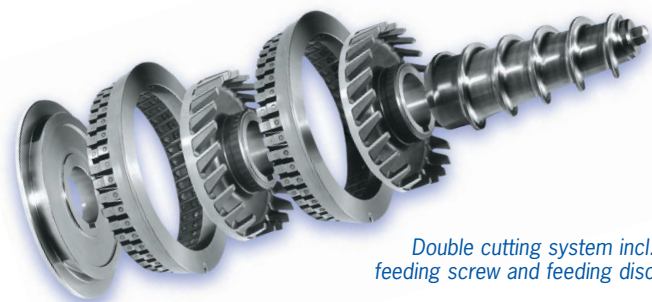
Applications and Processing Steps

Applications: (some examples)

- ✓ Meat emulsions
- ✓ Liver paté
- ✓ Emulsions
- ✓ Marinades and sauces
- ✓ Baby Food
- ✓ Vegetable and fruit grinding
- ✓ Biscuit rework grinding
- ✓ Fish products

Processes:

- ✓ Cutting
- ✓ Dispersing
- ✓ Emulsifying
- ✓ Homogenizing



Design of Stephan Microcut®: The cutting system

The long-life contactless rotor stator system allows premium fine cutting and emulsifying effects in the same machine.

With special tools difficult products, like sinews, soft bones and skin can be cutted in the best quality.

Stephan Microcut® Versions



Stephan Microcut® Versions



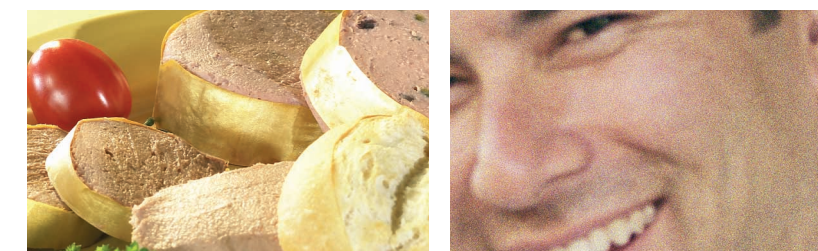
Technical Data

Type		MC 10/12/15	MCH 20/150	MCH-D 150/180	MCH 10	MCH 20 K MCH 20 KVS*
Product examples		paté, fish, meat	paté, fish, meat	paté, fish, meat, baby food	emulsions, marinades, sauces	vegetables and fruits, biscuit rework
Capacity (heavily dependent on product)	[l/h]	1200	1200/4500	4500/6000	3000	1200 [kg/h]
Funnel size	l	40/90/120	120/150	150/250	90/125/250	40
Cutting system		single	single	double	single	single*
Cutting gaps	mm	0.05 / 0.2 / 0.35 / 0.5 / 0.7 / 0.9 / 1.25 / 1.5 / 1.8 / 2.0 / 3.0				
Speed	[rpm]	3000	3000	3000	3000	3000
Energy requirements Main drive	[kW]	7.5/9/11	15/30	45 or 55/ 75 or 90	5.5/7.5	15

* KVS with additional pre-cutting system

Test Facilities

The test facilities at our headquarters in Hameln (Germany) are available for feasibility studies and demonstration runs of the Stephan Microcut®.



Stephan Machinery - world-wide at your disposal

Headquarter:

Stephan Machinery GmbH & Co.
Stephanplatz 2
31789 Hameln • GERMANY
phone: +49 (0) 51 51 / 5 83 -0 • fax: +49 (0) 51 51 / 5 83 -6 42
microcut@stephan-machinery.com
www.stephan-machinery.com

Subsidiaries/Representatives:

Stephan bvba

Sluis 11
9810 Nazareth • BELGIUM
phone: +32 (0) 9 / 3 85 83 55 • fax: +32 (0) 9 / 3 85 81 87
info@stephan-belgium.be

Sympak France Sarl - Stephan Division -

ZAC du Mandinet
Rue des Campanules
77185 Lognes • FRANCE
phone: +33 (0) 1 / 64 80 54 30 • fax: +33 (0) 1 / 60 06 74 14
sympak-france@sympak.com

Sympak Asia Pacific Pte. Ltd. - Stephan Division -

23 Tagore Lane
#03-12 Tagore 23 Warehouse
Singapore 787601 • SINGAPORE
phone: +65 / 64 55 / 76 70 • fax: +65 / 64 55 / 62 20
sympak-asiapacific@sympak.com

Sympak Inc. - Stephan Division -

1385 Armour Boulevard
Mundelein, IL 60060 • USA
phone: +1 / 8 47 / 2 47 01 82 • fax: +1 / 8 47 / 2 47 01 84
stephansales-usa@sympak.com

Stephan UK Ltd.

PO Box 162
Deeside
CH5 3SZ • UK
phone: +44 (0) 8 45 / 4 56 08 23 • fax: +44 (0) 8 45 / 4 56 08 24
info@stephan-uk.co.uk

Sympak Latin America Ltd. (Lynkin' SD Ltd.)

Sao Benedito Office Tower
Rua Sao Benedito, 509 Cj. 81,
04735-000 Alto da Boa Vista Sao Paulo, SP • BRAZIL
phone: +55 (11) 55 46 01 34 • fax: +55 (11) 55 46 01 78
marco@sympak.com.br

Your dealer in your country:

Stephan Nederland B.V.

Plesmanweg 15
7602 PD Almelo • NETHERLANDS
phone: +31 (0) 5 46 / 87 41 11 • fax: +31 (0) 5 46 / 86 45 46
info@stephan.nl

Stephan Machinery GmbH & Co.

Sales Representative Switzerland
Mr Marcel Heeb
Gewerbehaus Tüfiwies
Schickmattweg 8
8332 Russikon • SWITZERLAND
phone: +41 (0) 44 / 9 55 06 08 • fax: +41 (0) 44 / 9 55 06 88
stephan-machinery@bluewin.ch

000 Sympak St. Petersburg Branch Office - Stephan Division -

Business Center "Evro-Auto" 3rd Floor, Office 332
Levashovskiy Pr. Dom 13, Litera G
St. Petersburg, 197110 • RUSSIA
phone: +7 / 8 12 / 1 02 11 84 • fax: +7 / 8 12 / 1 02 11 87
sympak-stpetersburg-russia@sympak.com

Stephan Machinery Polska Sp. z o.o.

Borowiec, ul. Leśna 148
62-035 Kórnik • POLAND
phone: +48 (0) 61 / 8 17 12 01 • fax: +48 (0) 61 / 8 17 12 01
rosik@stephan-machinery.com

For further dealers please contact Stephan headquarter.

All content is subject to copyright and is owned and controlled by Stephan Machinery GmbH & Co. The content may not be copied, stored (in any medium), published or otherwise redistributed without the permission of Stephan Machinery GmbH & Co.